



CPL

Product Information Sheet

Standard Specification

Dimensions

Width/Depth/Height (mm)	1100/1100/1850
Inlet diameter (mm)	350
Outlet diameter (mm)	50
Tare weight (kg)	170
Capacity (L)	900

Composition

Liner	LMDPE ¹
Frame	Mild Steel (galvanised)

Options

- Screw closure or clamp band lid
- Anti – tilts on frame
- Full fork tunnels on frame (maximum handling stability).
- Various vents and top fittings
- Vinyl logos.
- Coloured liner.
- Anti-static liner.

1 – Linear Medium Density Polyethylene

Description

The CPL 900 is a reusable IBC for blending and mixing liquids.

The CPL liner is rotationally moulded in natural UV stabilised linear medium density polyethylene. The manufacturing process produces seam free and virtually stress free thick walled containers that have excellent resistance to industrial wear and tear, corrosion and environmental stress cracking.

The liner has a central vertical outlet to aid complete discharge of contents. The liner is supported and protected by a galvanised mild steel frame, providing excellent resistance to the elements. The frame has integral fork lift and stacking capability, so units can be stacked for loading and space saving.

The liner inlet is 350mm in diameter and has a HDPE² screw cap fitted with an EPDM⁵ O-ring seal as standard. The outlet is a 50mm single union UPVC⁴ ball valve fitted with EPDM⁵ seals.

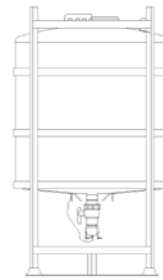


A blending and mixing vessel for liquids

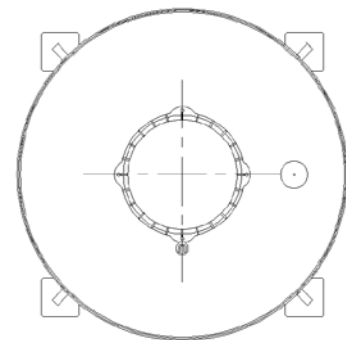
Model shown is a CPL 900 with a powder coated frame.



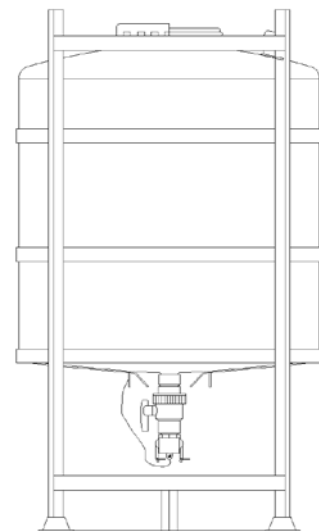
CPL Product Range



TYPE	CPL 900
Capacity - L	900
Height - mm	1850
Tare Weight - kg	170



CPL Plan View



CPL Front View

Whilst every attempt has been made to ensure that the information provided in this product information sheet is accurate and reliable Francis Ward cannot accept responsibility for the interpretation of the information provided. It is the responsibility of the user to determine the chemical compatibility of the container with its intended contents.



Francis Ward – A Division of The Rotational Mouldings Group

Brook House, 221 Bowling Back Lane, Bradford, BD4 8SJ, UK

Tel: +44 (0)1274 707030 | Fax: +44 (0)1274 724704 | Email: sales@francisward.com | Web: www.francisward.com